

测试报告

No. CANEC1101780501

日期: 2011年05月17日 第1页,共5页

深圳市惠怡华普电子有限公司
中国深圳市南山区华侨城东部工业区B3栋4楼东

以下测试之样品是由申请者所提供及确认:

RF射频模块 RFM83

SGS工作编号 : 13115536 - SZ
SGS内部编号 : 2.1
型号 : RFM83
客户参考信息 : 型号:RFM84
样品接收日期 : 2011年05月12日
测试周期 : 2011年05月12日 - 2011年05月17日

测试要求 : 根据客户要求测试
测试方法 : 请参见下一页
测试结果 : 请参见下一页

通标标准技术服务有限公司
授权签名



Alpher Qiu丘尽花
批准签署人

备注: 根据客户申请, SGS出具了此中文报告, 英文版本可根据客户要求提供. (The Chinese test report is issued according to the applicant's request. The English version is available from SGS if further needed)

This document is issued by the Company subject to its General Conditions of Service printed overleaf, available on request or accessible at http://www.sgs.com/terms_and_conditions.htm and, for electronic format documents, subject to Terms and Conditions for Electronic Documents at www.sgs.com/terms_e-document.htm. Attention is drawn to the limitation of liability, indemnification and jurisdiction issues defined therein. Any holder of this document is advised that information contained hereon reflects the Company's findings at the time of its preparation only, and within the limits of Client's instructions, if any. The Company's sole responsibility is to its Client and this document does not exonerate parties to a transaction from exercising all their rights and obligations under the transaction documents. This document cannot be reproduced except in full, without prior written approval of the Company. Any unauthorized alteration, forgery or falsification of the content or appearance of this document is unlawful and offenders may be prosecuted to the fullest extent of the law. Unless otherwise stated, the results shown in this test report refer only to the sample(s) tested.

测试报告

No. CANEC1101780501

日期: 2011年05月17日 第2页,共5页

测试结果:

样品1 ID : CAN11-017805.001
 样品1描述 : 带电子元件的绿色"PCB" (混合)

元素分析

测试项目	单位	测试方法 (参考)	测试结果	MDL
镉 (Cd)	mg/kg	IEC 62321:2008, ICP-OES	N.D.	2
铅 (Pb)	mg/kg	IEC 62321:2008, ICP-OES	12	2
汞 (Hg)	mg/kg	IEC 62321:2008, ICP-OES	N.D.	2
碱性溶液萃取测六价铬(Cr VI)	mg/kg	IEC 62321:2008, UV-Vis	N.D.	2

注释:

1. mg/kg = ppm
2. N.D.= 未检出 (< MDL)
3. MDL = 方法检测限

阻燃剂

测试项目	单位	测试方法 (参考)	测试结果	MDL
多溴联苯(PBBs)之和	mg/kg	-	N.D.	-
单溴联苯	mg/kg	IEC 62321:2008, GC-MS	N.D.	5
二溴联苯	mg/kg	IEC 62321:2008, GC-MS	N.D.	5
三溴联苯	mg/kg	IEC 62321:2008, GC-MS	N.D.	5
四溴联苯	mg/kg	IEC 62321:2008, GC-MS	N.D.	5
五溴联苯	mg/kg	IEC 62321:2008, GC-MS	N.D.	5
六溴联苯	mg/kg	IEC 62321:2008, GC-MS	N.D.	5
七溴联苯	mg/kg	IEC 62321:2008, GC-MS	N.D.	5
八溴联苯	mg/kg	IEC 62321:2008, GC-MS	N.D.	5
九溴联苯	mg/kg	IEC 62321:2008, GC-MS	N.D.	5
十溴联苯	mg/kg	IEC 62321:2008, GC-MS	N.D.	5
多溴二苯醚(PBDEs)之和	mg/kg	-	N.D.	-
单溴二苯醚	mg/kg	IEC 62321:2008, GC-MS	N.D.	5
二溴二苯醚	mg/kg	IEC 62321:2008, GC-MS	N.D.	5
三溴二苯醚	mg/kg	IEC 62321:2008, GC-MS	N.D.	5
四溴二苯醚	mg/kg	IEC 62321:2008, GC-MS	N.D.	5
五溴二苯醚	mg/kg	IEC 62321:2008, GC-MS	N.D.	5
六溴二苯醚	mg/kg	IEC 62321:2008, GC-MS	N.D.	5
七溴二苯醚	mg/kg	IEC 62321:2008, GC-MS	N.D.	5
八溴二苯醚	mg/kg	IEC 62321:2008, GC-MS	N.D.	5
九溴二苯醚	mg/kg	IEC 62321:2008, GC-MS	N.D.	5
十溴二苯醚	mg/kg	IEC 62321:2008, GC-MS	N.D.	5

This document is issued by the Company subject to its General Conditions of Service printed overleaf, available on request or accessible at http://www.sgs.com/terms_and_conditions.htm and, for electronic format documents, subject to Terms and Conditions for Electronic Documents at www.sgs.com/terms_e-document.htm. Attention is drawn to the limitation of liability, indemnification and jurisdiction issues defined therein. Any holder of this document is advised that information contained hereon reflects the Company's findings at the time of its preparation only, and within the limits of Client's instructions, if any. The Company's sole responsibility is to its Client and this document does not exonerate parties to a transaction from exercising all their rights and obligations under the transaction documents. This document cannot be reproduced except in full, without prior written approval of the Company. Any unauthorized alteration, forgery or falsification of the content or appearance of this document is unlawful and offenders may be prosecuted to the fullest extent of the law. Unless otherwise stated, the results shown in this test report refer only to the sample(s) tested.

测试报告

No. CANEC1101780501

日期: 2011年05月17日 第3页,共5页

注释:

1. mg/kg = ppm
2. N.D.= 未检出 (< MDL)
3. MDL = 方法检测限
4. "-" = 未规定
5. 多溴二苯醚 = 多溴联苯醚

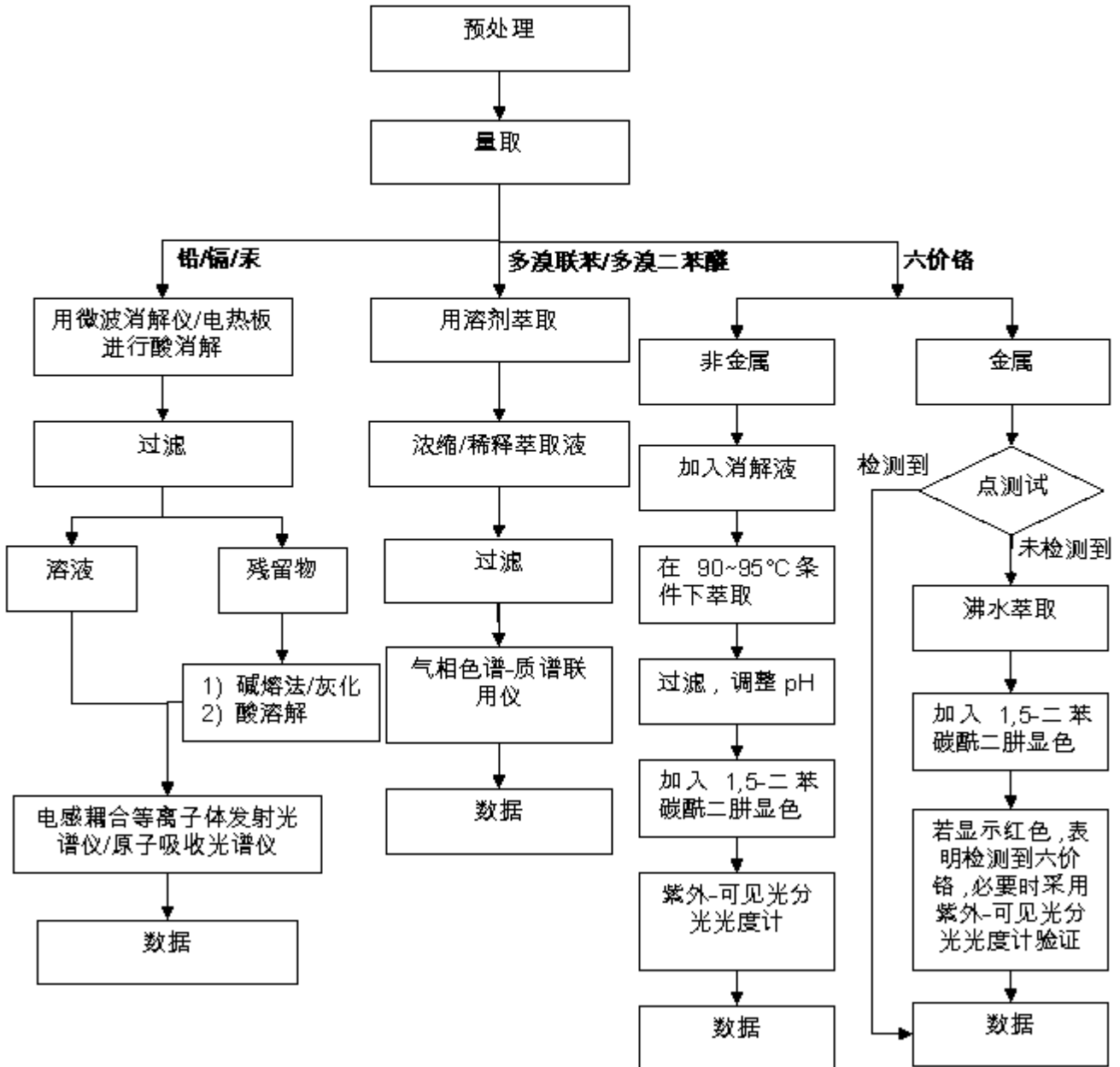
备注: 样品的测试是基于申请人要求混合测试, 报告中的混合测试结果不代表其中个别单一材质的含量, 该测试数据仅供参考。

This document is issued by the Company subject to its General Conditions of Service printed overleaf, available on request or accessible at http://www.sgs.com/terms_and_conditions.htm and, for electronic format documents, subject to Terms and Conditions for Electronic Documents at www.sgs.com/terms_e-document.htm. Attention is drawn to the limitation of liability, indemnification and jurisdiction issues defined therein. Any holder of this document is advised that information contained hereon reflects the Company's findings at the time of its preparation only and within the limits of Client's instructions, if any. The Company's sole responsibility is to its Client and this document does not exonerate parties to a transaction from exercising all their rights and obligations under the transaction documents. This document cannot be reproduced except in full, without prior written approval of the Company. Any unauthorized alteration, forgery or falsification of the content or appearance of this document is unlawful and offenders may be prosecuted to the fullest extent of the law. Unless otherwise stated, the results shown in this test report refer only to the sample(s) tested.

附件

RoHS 测试流程图

- 1) 分析人员: 汪丹 / 余晓璐 / 詹达琦
- 2) 项目负责人: 余奕东 / 杨伟兴
- 3) 样品按照下述流程被完全消解 (六价铬和多溴联苯/多溴二苯醚测试除外)



This document is issued by the Company subject to its General Conditions of Service printed overleaf, available on request or accessible at http://www.sgs.com/terms_and_conditions.htm and, for electronic format documents, subject to Terms and Conditions for Electronic Documents at www.sgs.com/terms_e-document.htm. Attention is drawn to the limitation of liability, indemnification and jurisdiction issues defined therein. Any holder of this document is advised that information contained hereon reflects the Company's findings at the time of its preparation only, and within the limits of Client's instructions, if any. The Company's sole responsibility is to its Client and this document does not exonerate parties to a transaction from exercising all their rights and obligations under the transaction documents. This document cannot be reproduced except in full, without prior written approval of the Company. Any unauthorized alteration, forgery or falsification of the content or appearance of this document is unlawful and offenders may be prosecuted to the fullest extent of the law. Unless otherwise stated, the results shown in this test report refer only to the sample(s) tested.

测试报告

No. CANEC1101780501

日期: 2011年05月17日 第5页,共5页

样品照片:



此照片仅限于随SGS正本报告使用
*** 报告完 ***

This document is issued by the Company subject to its General Conditions of Service printed overleaf, available on request or accessible at http://www.sgs.com/terms_and_conditions.htm and, for electronic format documents, subject to Terms and Conditions for Electronic Documents at www.sgs.com/terms_e-document.htm. Attention is drawn to the limitation of liability, indemnification and jurisdiction issues defined therein. Any holder of this document is advised that information contained hereon reflects the Company's findings at the time of its preparation only, and within the limits of Client's instructions, if any. The Company's sole responsibility is to its Client and this document does not exonerate parties to a transaction from exercising all their rights and obligations under the transaction documents. This document cannot be reproduced except in full, without prior written approval of the Company. Any unauthorized alteration, forgery or falsification of the content or appearance of this document is unlawful and offenders may be prosecuted to the fullest extent of the law. Unless otherwise stated, the results shown in this test report refer only to the sample(s) tested.